

ROYAL® Building Products

Our various pipe and fittings solutions have been manufactured to meet the needs of our customers and their applications.

Contact the below Sales Center for more information.

- Municipal Pipe & Fittings Solutions
- Plumbing Pipe & Fittings Solutions
- Industrial Pipe & Fittings Solutions
- Electrical Pipe & Fittings Solutions

Sales & Distribution Center
 Royal Building Products
 56400 Mound Road
 Shelby Township, MI 48316
 T 1.800.232.5690
 F 1.586.781.0888

royalbuildingproducts.com

November 2016
 Printed in USA
 Pub No. 1306P



ROYAL® Municipal Solutions



PVC Gasketed & Solvent Weld Pipe

**GROW YOUR
BUSINESS
WITH US**

 ROYAL® Municipal Solutions
royalbuildingproducts.com





Three specimens of the pipe, each about 6" long are to be flattened between parallel plates in a suitable press until the distance between the plates is 40% of the original outside diameter of the pipe. The rate of loading is uniform and such that the compression is completed within 2 to 5 minutes. The specimens shall be examined for evidence of splitting, cracking or breaking.

CORREGATED SEWER PIPE

Color Coding

All Royal Municipal Solutions Kor-Flo® PVC Profile Pipe is color coded green. K-Series Profile fabricated fittings are green or white..

Installation

Royal Kor-Flo® pipe weighs less than solid wall sewer pipe, therefore handling and installation costs are reduced substantially. Our pipe can be easily cut in the field, and the joint assembly can be handled in the trench without using heavy equipment.

Joining

Clean the bell and spigot of all debris. Lubricant must be applied to the interior of the bell end only. The pipes are then placed in straight alignment, push the spigot into the bell to the insertion line marked on the pipe. Pipe assembly can be completed by hand using a bar and block, lever pullers or hydraulic jacks.

Our factory-installed gaskets eliminate the problems of rolling or fish mouting. Care should be taken to avoid over insertion into the pipe bell beyond the spigot insertion line.



Impact Resistance Test

Samples of pipe to be tested for low temperature impact resistance are conditioned at 32°F (±3.6°F) for a period of not less than 16 hours.



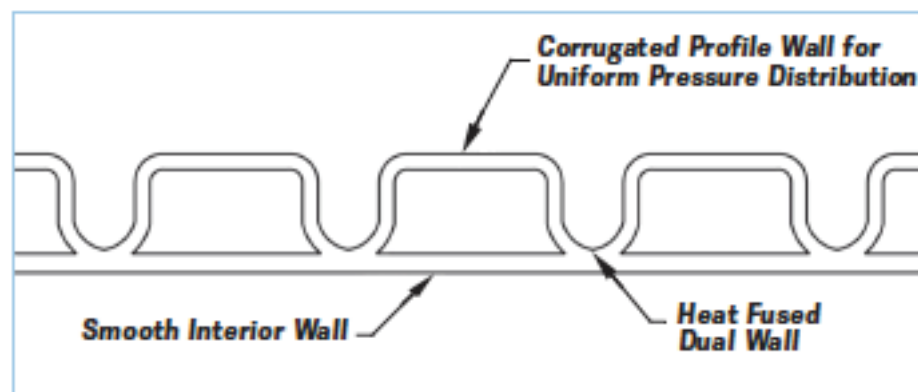
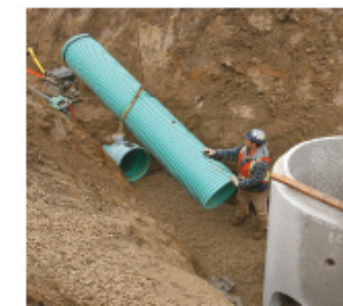
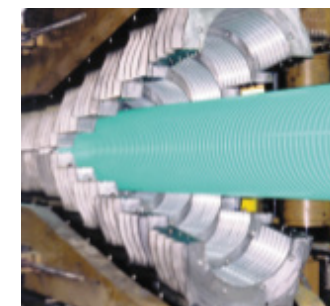
Extrusion Quality Test

The pipe will not flake or disintegrate after being immersed in anhydrous acetone for 20 minutes. There is no separation of the two walls in dual wall corrugated pipe.



Product Quality

Our pipe is continually tested in our quality control laboratory to ensure conformance with CSA and ASTM requirements. No pipe enters our yard without the seal of approval from our quality control team.



Cost Savings



When compared to solid wall SDR 35 pipe, Royal Kor-Flo™ pipe is lightweight thereby greatly reducing the time, manpower, and heavy equipment normally associated with storm and sanitary pipe installations.

Superior Pipe Stiffness



Royal Kor-Flo® pipe has a concentrically corrugated exterior wall that acts as a reinforcing support, therefore providing exceedingly high stiffness.

Dual Wall System



Royal Kor-Flo® pipe is a dual wall pipe that provides an extremely smooth interior wall which allows excellent flow rates and resists the build up of solids. This smooth interior yields a Manning's flow coefficient of n=0.009.